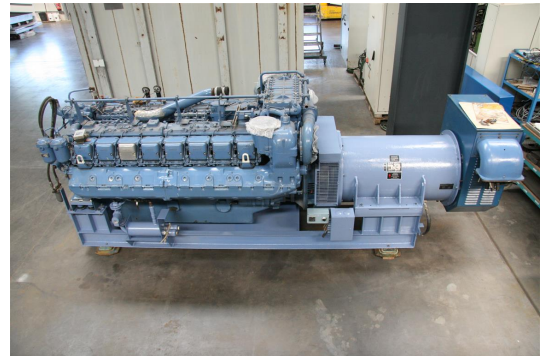


# Generator

## MTU MTU 16396



stock-no.: 1201733  
type of machine: Generator  
make: MTU  
type: MTU 16396  
year of manufacture: 1985  
type of control: other  
country of origin: Germany  
storage location: Lager 1 Schleppdach  
delivery time: immediately  
freight basis: EXW, free on truck unpacked  
price: on request



### technical details

rated capacity:	1410 kVA
drive motor:	1270 kW
Number of working hours:	980 h
revolution per minute:	1500 U/min
type of fuel:	Diesel
weight of the machine ca.:	ca. 9,0 t
space requirements of the machine approx.:	m

### additional information

CHP - (Combined Heating and Power Plant) (Diesel)  
with air output filter  
Standby Aggregate:  
- 1410 kVA  
- fuel consumption approx. 220g/kWh  
- parallel operation possible such as public net + 2. Generator

Generator:  
- make A.van Kaick; type DKBN 100/1400-4TS  
- 1410kVA by 1500U/min

Motor:  
- make MTU Friedrichshafen; type 16V 396 TC 33  
- 1270 kW by 1500 rpm  
- cooling via water, start with battery

equipment:  
- heat exchanger with ventilator  
- fuel tank  
- Siemens circuit breaker  
- not many documentation available  
- no electric cabinet